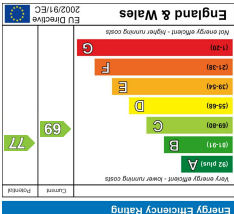
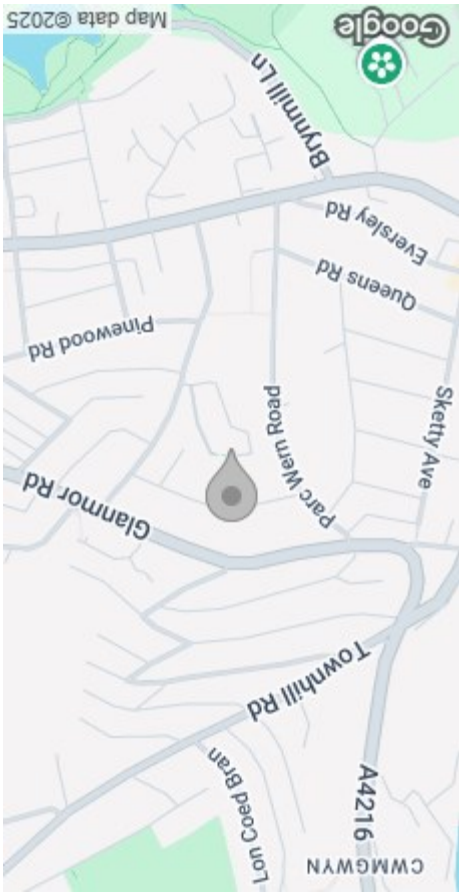


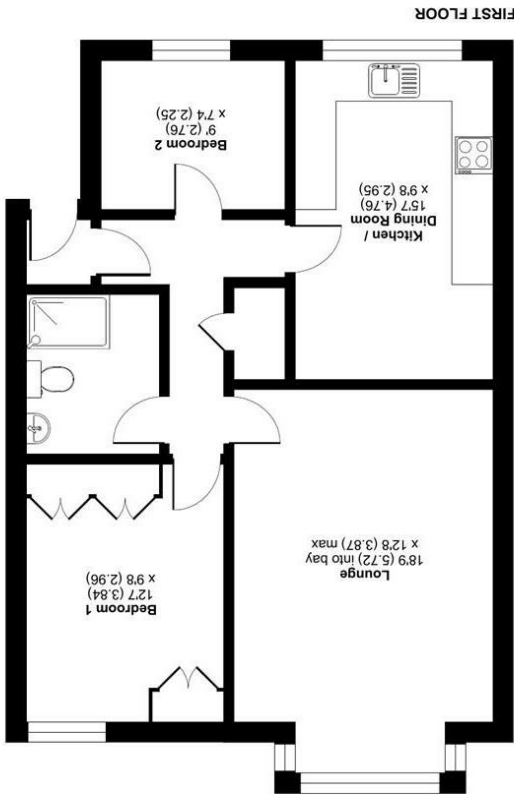
These particulars, whilst believed to be accurate are set out as a general outline only for guidance and do not constitute any part of an offer or contract. Intending purchasers should not rely on them as statements or representations of fact, but must satisfy themselves by inspection or otherwise as to their accuracy. No person in this firm's employment has the authority to make or give any representation or warranty in respect of the property.



EPC



AREA MAP



Long Oaks Court, Swansea, SA2

Approximate Area = 731 sq ft / 67.9 sq m

For identification only - Not to scale

FLOOR PLAN



65 Long Oaks Court

Sketty, Swansea, SA2 0QH

Asking Price £130,000



GENERAL INFORMATION

No Onward Chain.
Offered to the market is this Spacious ground Floor Two Bedroom Apartment ideally located in a quiet and well kept cul-de-sac location within Sketty, offering easy access to the nearby amenities at Sketty Cross and Uplands, and a close distance to Singleton hospital, Singleton park and Swansea University.
The apartment comprises: Hallway, Lounge, Kitchen / Diner, Two Bedrooms and Shower Room.
Benefitting from double glazing, electric storage heating, built-in storage facilities and an allocated parking space at the rear.
This would be ideal as a First Time Buy, Investment or Downsizing Purchase.

FULL DESCRIPTION

GROUND FLOOR

ENTRANCE HALL

LOUNGE
18'9" into bay x 12'8" (5.72 into bay x 3.87)

KITCHEN/DINING ROOM
15'7" x 9'8" (4.76 x 2.95)

BEDROOM 1
12'7" x 9'8" (3.84 x 2.96)

BEDROOM 2
9'0" x 7'4" (2.76 x 2.25)

SHOWER ROOM

EXTERNAL
Communal gardens and seating areas.



PARKING
1 allocated parking space and visitor bays.

TENURE
Lease Term - 110 years from 31 December 2019
Lease Term Remaining - 104 years
Ground Rent - £250.00 per annum
Management - Long Oaks Court Management LTD
Service Charge - £1600.00 per annum - reviewed yearly

EPC
C

COUCIL TAX
C

SERVICES
Mains electrics. Mains sewerage. Mains water. Mobile phone and Broadband can be found via Ofcom Checker.

